

BAINBRIDGE TOWNSHIP



SEC. 1

SEC. 2

SEC. 3

TRACT ONE

SCALE 1" = 300'

W. M. K. & P. Hoehn 5047 27.78 Ac.
J. W. Petrusz 576-575 2.74 Ac.

587-451 Sadi's York 29.0 Ac.
D. G. Demming 585-849
513-75, 505-693
Viktor G. Sasav L. 21 Ac.
J. J. Fenkitz 13 Ac. 597-691

22 Ac.
E. S. HONE 15.99 Ac. 246
24.9 377
S. M. BISHOP 1.5 Ac.
C. R. McHenry 12 Ac. 396-359
286-497
P. P. Kowicki 3 Ac.

3
J. G. Zmarzly 39.405 Ac.
671-396
671-396
671-396

3
E. S. HONE 15.99 Ac. 246
24.9 377
S. M. BISHOP 1.5 Ac.
C. R. McHenry 12 Ac. 396-359
286-497
P. P. Kowicki 3 Ac.

3
J. G. Zmarzly 39.405 Ac.
671-396
671-396
671-396

3
E. S. HONE 15.99 Ac. 246
24.9 377
S. M. BISHOP 1.5 Ac.
C. R. McHenry 12 Ac. 396-359
286-497
P. P. Kowicki 3 Ac.

3
J. G. Zmarzly 39.405 Ac.
671-396
671-396
671-396

3
E. S. HONE 15.99 Ac. 246
24.9 377
S. M. BISHOP 1.5 Ac.
C. R. McHenry 12 Ac. 396-359
286-497
P. P. Kowicki 3 Ac.

3
J. G. Zmarzly 39.405 Ac.
671-396
671-396
671-396

3
E. S. HONE 15.99 Ac. 246
24.9 377
S. M. BISHOP 1.5 Ac.
C. R. McHenry 12 Ac. 396-359
286-497
P. P. Kowicki 3 Ac.

3
J. G. Zmarzly 39.405 Ac.
671-396
671-396
671-396

3
E. S. HONE 15.99 Ac. 246
24.9 377
S. M. BISHOP 1.5 Ac.
C. R. McHenry 12 Ac. 396-359
286-497
P. P. Kowicki 3 Ac.

3
J. G. Zmarzly 39.405 Ac.
671-396
671-396
671-396

3
E. S. HONE 15.99 Ac. 246
24.9 377
S. M. BISHOP 1.5 Ac.
C. R. McHenry 12 Ac. 396-359
286-497
P. P. Kowicki 3 Ac.

3
J. G. Zmarzly 39.405 Ac.
671-396
671-396
671-396

690-483 P. E. ZHUN 611-826 AND J. E. MASSIF 611-824

S. A. G. ZMARZLY

CHARLES AND LOTTIE BLEICKER

Lorin Woods 804-407 + 404

Metro-Mach & Tool Co. Inc.

AUBURN SPRINGS COUNTRY CLUB EST. VOL. 12, P. 90-91									
1	2	3	4	5	6	7	8	9	10
15A	16A	15A	15A	15A	15A	15A	15A	15A	15A
IMS Company 665-315									

Auburn Lands Inc.

Auburn Lands Inc.

R. & G. TIMMONS

74.50 Ac.

2

578-101 661-518

493-949

101.73 Ac.

5

S. A. G. ZMARZLY

CHARLES AND LOTTIE BLEICKER

Lorin Woods 804-407 + 404

39.405 Ac.

2

110.42 A

SEC. 1

S. A. G. ZMARZLY

CHARLES AND LOTTIE BLEICKER

Lorin Woods 804-407 + 404

39.405 Ac.

2

110.42 A

SEC. 1

S. A. G. ZMARZLY

CHARLES AND LOTTIE BLEICKER

Lorin Woods 804-407 + 404

39.405 Ac.

2

110.42 A

SEC. 1

S. A. G. ZMARZLY

CHARLES AND LOTTIE BLEICKER

Lorin Woods 804-407 + 404

39.405 Ac.

2

110.42 A

SEC. 1

S. A. G. ZMARZLY

CHARLES AND LOTTIE BLEICKER

Lorin Woods 804-407 + 404

39.405 Ac.

2

110.42 A

SEC. 1

S. A. G. ZMARZLY

CHARLES AND LOTTIE BLEICKER

Lorin Woods 804-407 + 404

39.405 Ac.

2

110.42 A

SEC. 1

S. A. G. ZMARZLY

CHARLES AND LOTTIE BLEICKER

Lorin Woods 804-407 + 404

39.405 Ac.

2

110.42 A

SEC. 1

S. A. G. ZMARZLY

CHARLES AND LOTTIE BLEICKER

Lorin Woods 804-407 + 404

39.405 Ac.

2

110.42 A

SEC. 1

S. A. G. ZMARZLY

CHARLES AND LOTTIE BLEICKER

Lorin Woods 804-407 + 404

39.405 Ac.

2

110.42 A

SEC. 1

S. A. G. ZMARZLY

CHARLES AND LOTTIE BLEICKER

Lorin Woods 804-407 + 404

39.405 Ac.

2

110.42 A

SEC. 1

S. A. G. ZMARZLY

CHARLES AND LOTTIE BLEICKER

Lorin Woods 804-407 + 404

39.405 Ac.

2

110.42 A

SEC. 1

S. A. G. ZMARZLY

CHARLES AND LOTTIE BLEICKER

Lorin Woods 804-407 + 404

39.405 Ac.

2

110.42 A

SEC. 1

S. A. G. ZMARZLY

CHARLES AND LOTTIE BLEICKER

Lorin Woods 804-407 + 404

39.405 Ac.

2

110.42 A

SEC. 1

S. A. G. ZMARZLY

CHARLES AND LOTTIE BLEICKER

Lorin Woods 804-407 + 404

39.405 Ac.

2

110.42 A

SEC. 1

S. A. G. ZMARZLY

CHARLES AND LOTTIE BLEICKER

Lorin Woods 804-407 + 404

39.405 Ac.

2

110.42 A

SEC. 1

S. A. G. ZMARZLY

CHARLES AND LOTTIE BLEICKER

Lorin Woods 804-407 + 404

39.405 Ac.

2

110.42 A

SEC. 1

S. A. G. ZMARZLY

CHARLES AND LOTTIE BLEICKER

Lorin Woods 804-407 + 404

39.405 Ac.

2

110.42 A

SEC. 1

S. A. G. ZMARZLY

CHARLES AND LOTTIE BLEICKER

Lorin Woods 804-407 + 404

39.405 Ac.

2

110.42 A

SEC. 1

S. A. G. ZMARZLY

CHARLES AND LOTTIE BLEICKER

Lorin Woods 804-407 + 404

39.405 Ac.

2

110.42 A

SEC. 1

S. A. G. ZMARZLY

CHARLES AND LOTTIE BLEICKER

Lorin Woods 804-407 + 404

39.405 Ac.

2

110.42 A

SEC. 1

S. A. G. ZMARZLY

CHARLES AND LOTTIE BLEICKER

Lorin Woods 804-407 + 404

39.405 Ac.

2

110.42 A

SEC. 1

S. A. G. ZMARZLY

CHARLES AND LOTTIE BLEICKER

Lorin Woods 804-407 + 404

39.405 Ac.

2

110.42 A

SEC. 1

S. A. G. ZMARZLY

CHARLES AND LOTTIE BLEICKER

Lorin Woods 804-407 + 404

39.405 Ac.

2

110.42 A

SEC. 1

S. A. G. ZMARZLY

CHARLES AND LOTTIE BLEICKER

Lorin Woods 804-407 + 404

39.405 Ac.

2

110.42 A

SEC. 1

S. A. G. ZMARZLY

CHARLES AND LOTTIE BLEICKER

Lorin Woods 804-407 + 404

39.405 Ac.

2

110.42 A

SEC. 1

S. A. G. ZMARZLY

CHARLES AND LOTTIE BLEICKER

Lorin Woods 804-407 + 404

39.405 Ac.

2

110.42 A

SEC. 1

S. A. G. ZMARZLY

CHARLES AND LOTTIE BLEICKER

Lorin Woods 804-407 + 404

39.405 Ac.

2

110.42 A

SEC. 1

S. A. G. ZMARZLY

CHARLES AND LOTTIE BLEICKER

Lorin Woods 804-407 + 404

39.405 Ac.

2

110.42 A

SEC. 1

S. A. G. ZMARZLY

CHARLES AND LOTTIE BLEICKER

Lorin Woods 804-407 + 404

39.405 Ac.

2

110.42 A

SEC. 1

S. A. G. ZMARZLY

CHARLES AND LOTTIE BLEICKER

Lorin Woods 804-407 + 404

39.405 Ac.

2

110.42 A

SEC. 1

S. A. G. ZMARZLY

CHARLES AND LOTTIE BLEICKER

Lorin Woods 804-407 + 404

39.405 Ac.

2

110.42 A

SEC. 1

S. A. G. ZMARZLY

CHARLES AND LOTTIE BLEICKER

Lorin Woods 804-407 + 404

39.405 Ac.

2

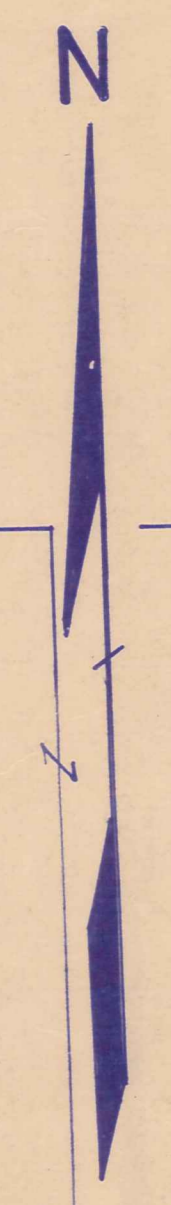
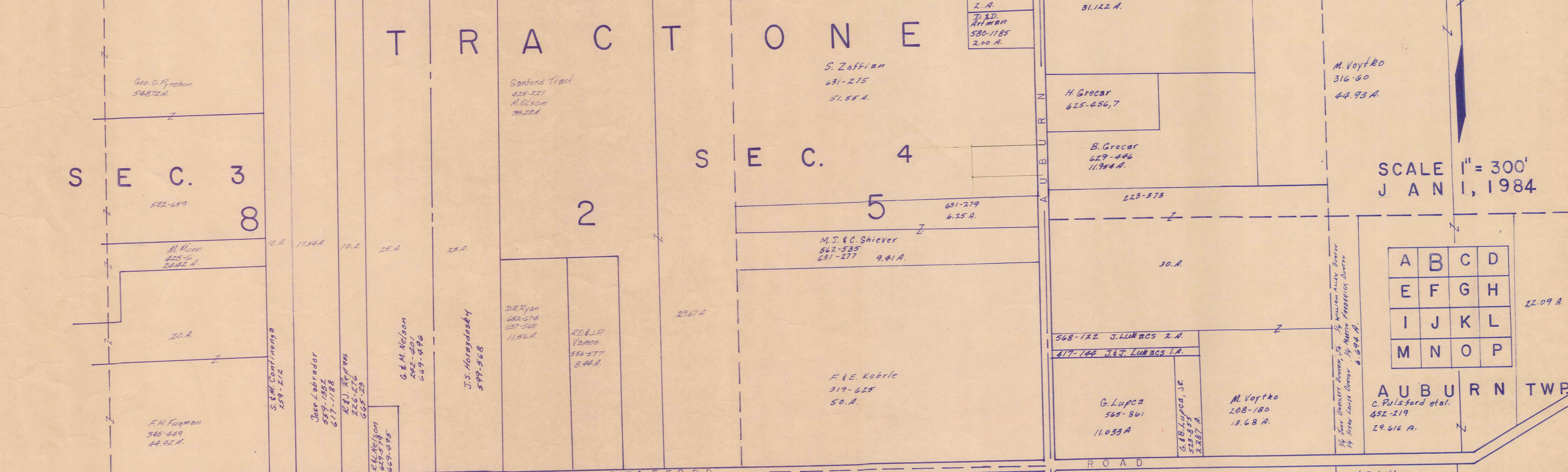
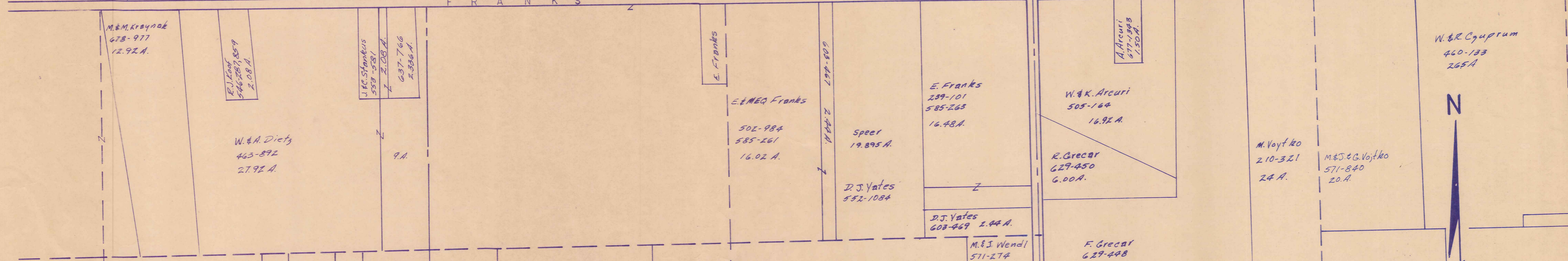
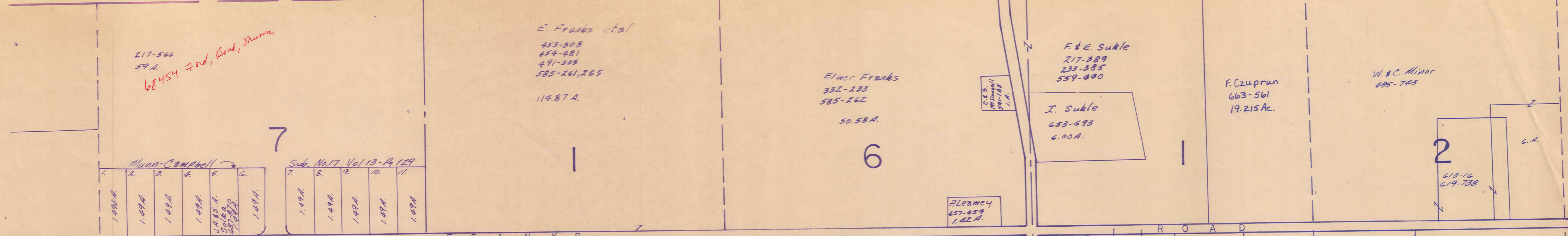
110.42 A

SEC. 1

S. A. G. ZMARZLY

CHARLES AND LOTTIE BLEICKER

Lorin Woods 804-40



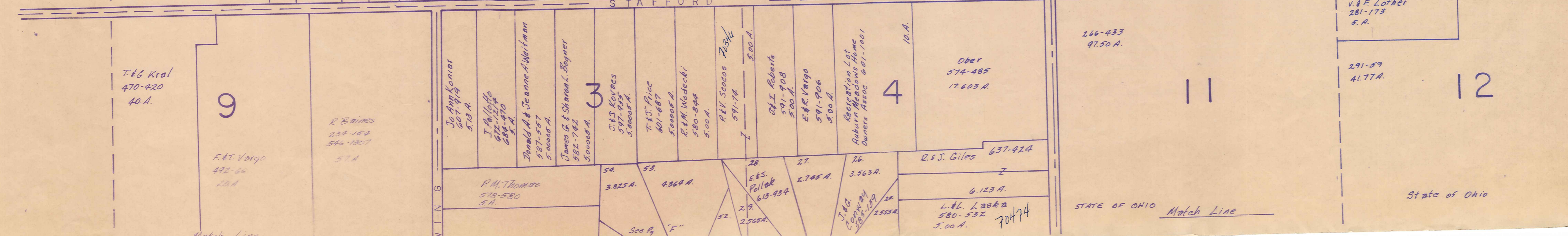
SCALE 1" = 300'
JAN 1, 1984

A	B	C	D
E	F	G	H
I	J	K	L
M	N	O	P

AUBURN TWP.

C. Pulsford et al.
452-219
29.616 A.

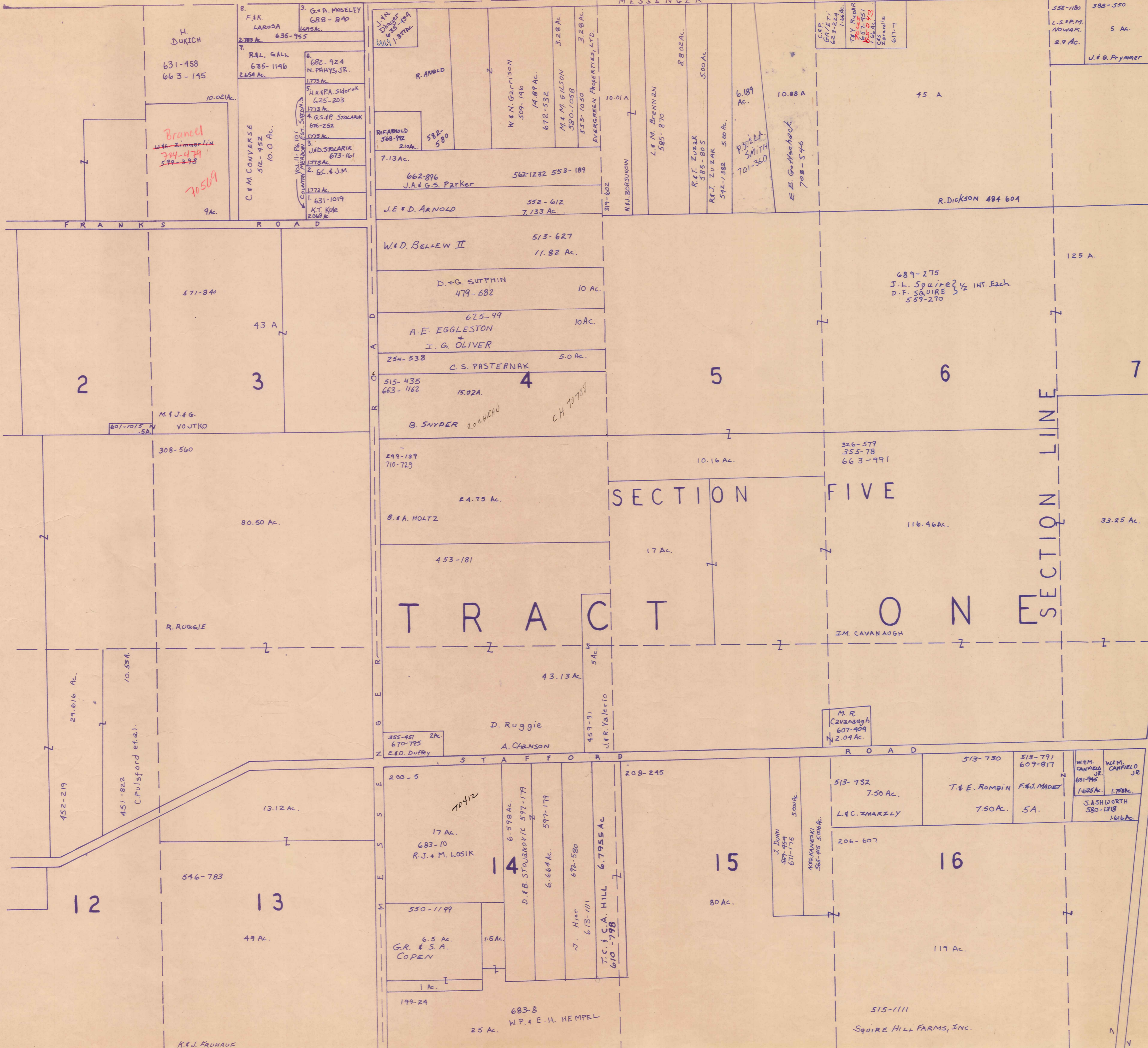
1/4 John Carpenter Owner, 1/4 William Miller, Owner
1/4 John Latta Owner, 1/4 Arthur Pfeiffer, Owner
6.674 A.



STATE OF OHIO Match Line

State of Ohio

NEWBURY TOWNSHIP



Branel
Zimmerlin
744-474
799-298
70509

M. & J. G.
VOJTKO
601-1015

29.616 Ac.
10.55 Ac.
451-822
C. Pulsford et al.

452-219
13.12 Ac.
546-783
49 Ac.
K. & J. FROHAUF
V. A. O'NEIL

MESSENGER ROAD
R. ANNOLD
W. M. GARRISON
M. M. GILSON
EYERGREEN PROPERTIES, LTD.
L. M. BRENNAN
R. T. ZUZAK
R. J. ZUZAK
E. E. Gutschick
J. H. DUNN
M. R. CAVANAUGH
M. R. CAVANAUGH
M. R. CAVANAUGH

W. & D. BELLEW II
D. & G. SUTPHIN
A. E. EGGLESTON
I. G. OLIVER
C. S. PASTERNAK
B. SNYDER
B. & A. HOLTZ
D. Ruggie
A. CHANSON

SECTION FIVE
Z. M. CAVANAUGH
D. Ruggie
A. CHANSON

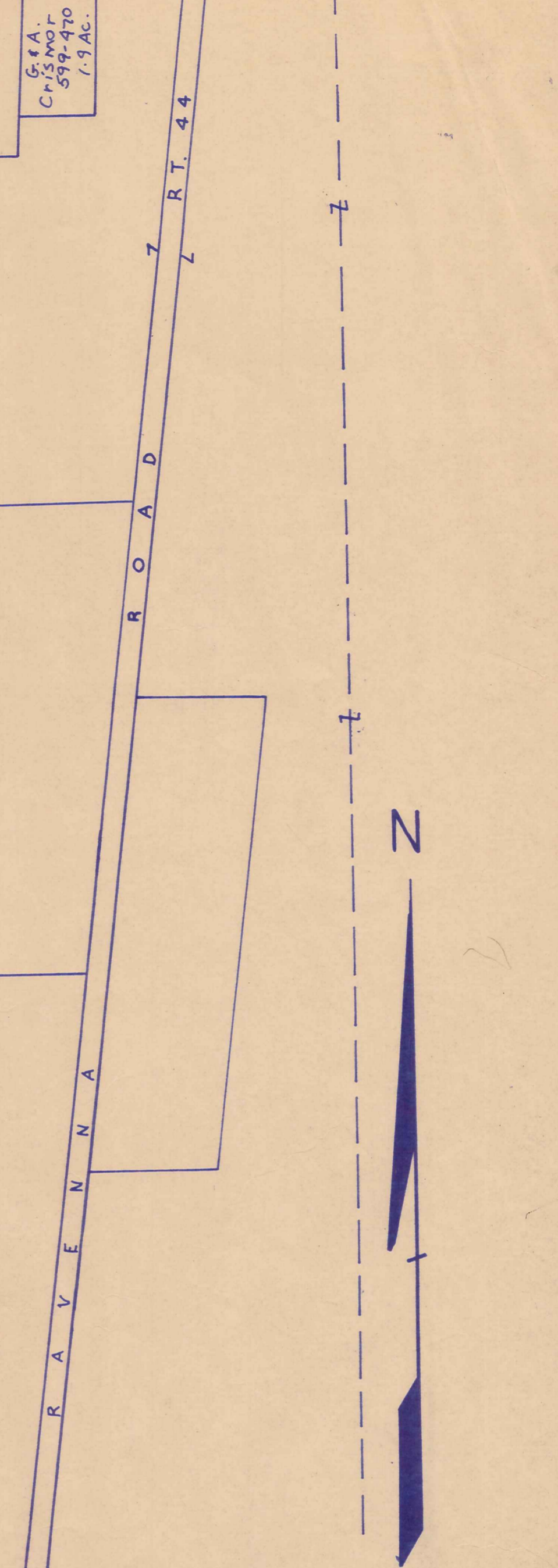
ST. ANDREW ROAD
R. J. & M. LOSIK
D. B. STOUZKOVIC
G. R. & S. A. COPEL
W. P. & E. H. HEMPEL
T. C. & C. A. HILL
SQUIRE HILL FARMS, INC.

552-1180
L. S. & P. M. NOWAK
2.9 Ac.
388-530
5 Ac.
J. & G. Prymmer
G. A. CAMPBELL
589-970
1.9 Ac.

689-275
J. L. SQUIRE
D. F. SQUIRE
559-270
1/2 INT. Each

526-579
355-78
663-991
513-730
513-791
609-817
T. & E. ROMBIN
F. & J. MADET
7.50 Ac.
5 A.

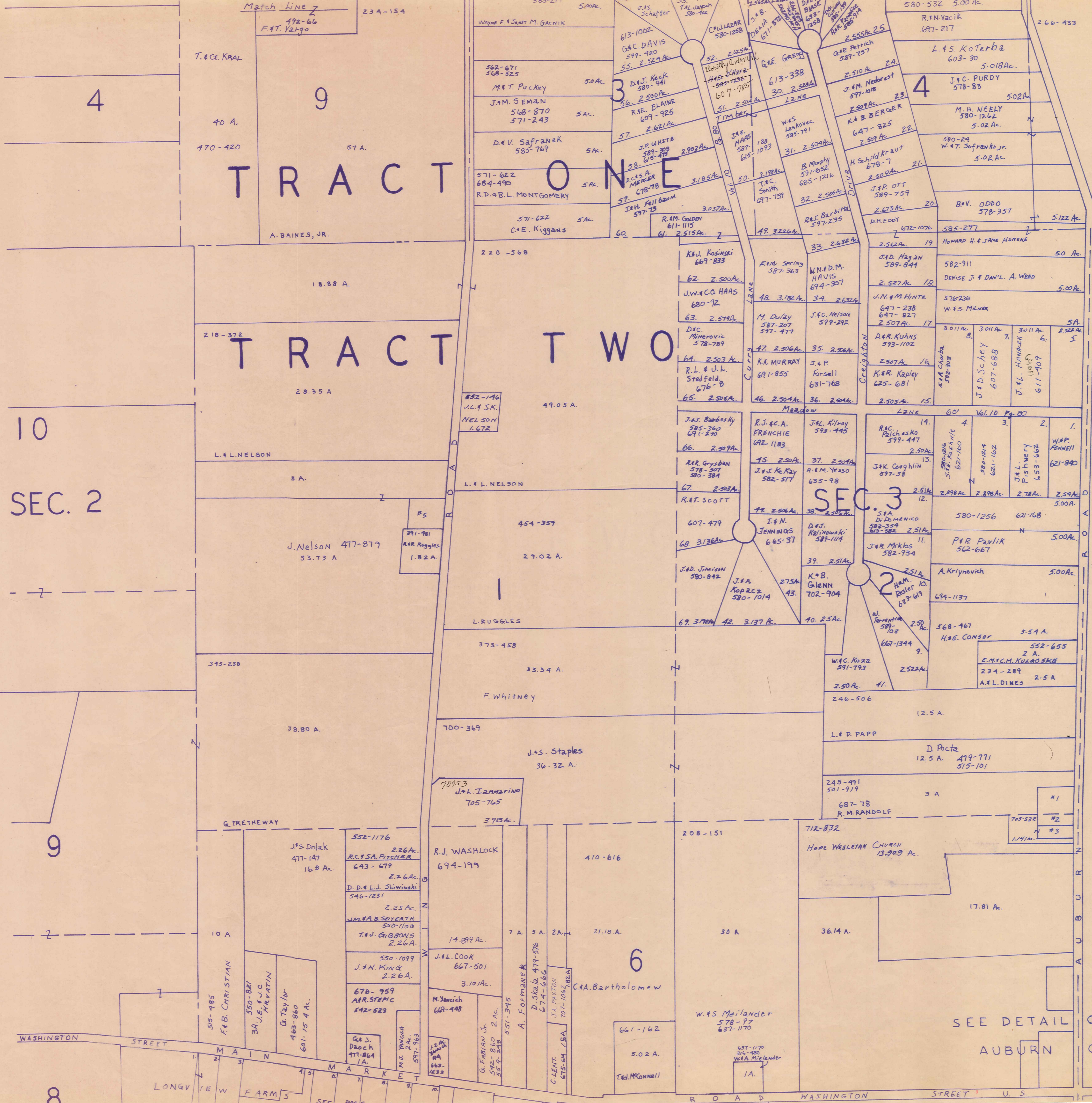
513-732
7.50 Ac.
L. & C. ZMARZLY
206-607
515-1111
SQUIRE HILL FARMS, INC.



SCALE 1"=300'
JAN 1, 1984

A	B	C	D
E	F	G	H
I	J	K	L
M	N	O	P

AUBURN TWP.



TRACT ONE

TRACT TWO

SEC 3

SCALE 1"=300'
JAN 1, 1984

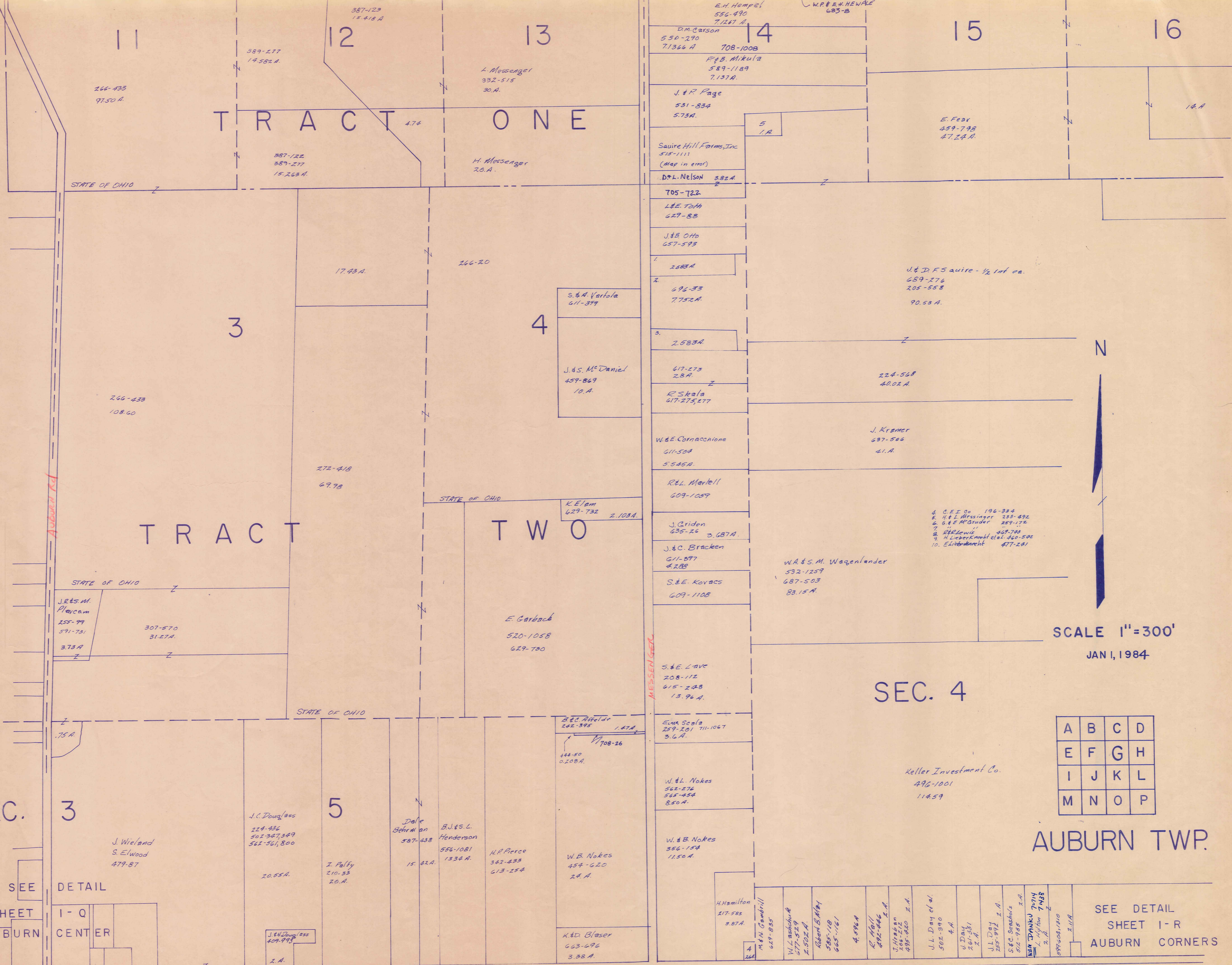
A	B	C	D
E	F	G	H
I	J	K	L
M	N	O	P

AUBURN TWP.

- No.
1. R. Randolph 706-884 1.4 Ac.
 2. M.E. Randolph 687-724 .95 Ac.
 3. G. Dines 705-532 .55 Ac.
 4. M.M. Vanier 663-1233 1.2 Ac.
 5. B. Whitney 239-123 .712 Ac.
 7. B.H. VZN Dyke 308-191 1.4 Ac.

SEE DETAIL OF
AUBURN
CENTER
I Q

WASHINGTON STREET
MAIN STREET
LONGVIEW FARMS
ROAD WASHINGTON STREET U.S.



TRACT ONE

TRACT TWO

SEC. 4

AUBURN TWP.

SCALE 1"=300'
JAN 1, 1984

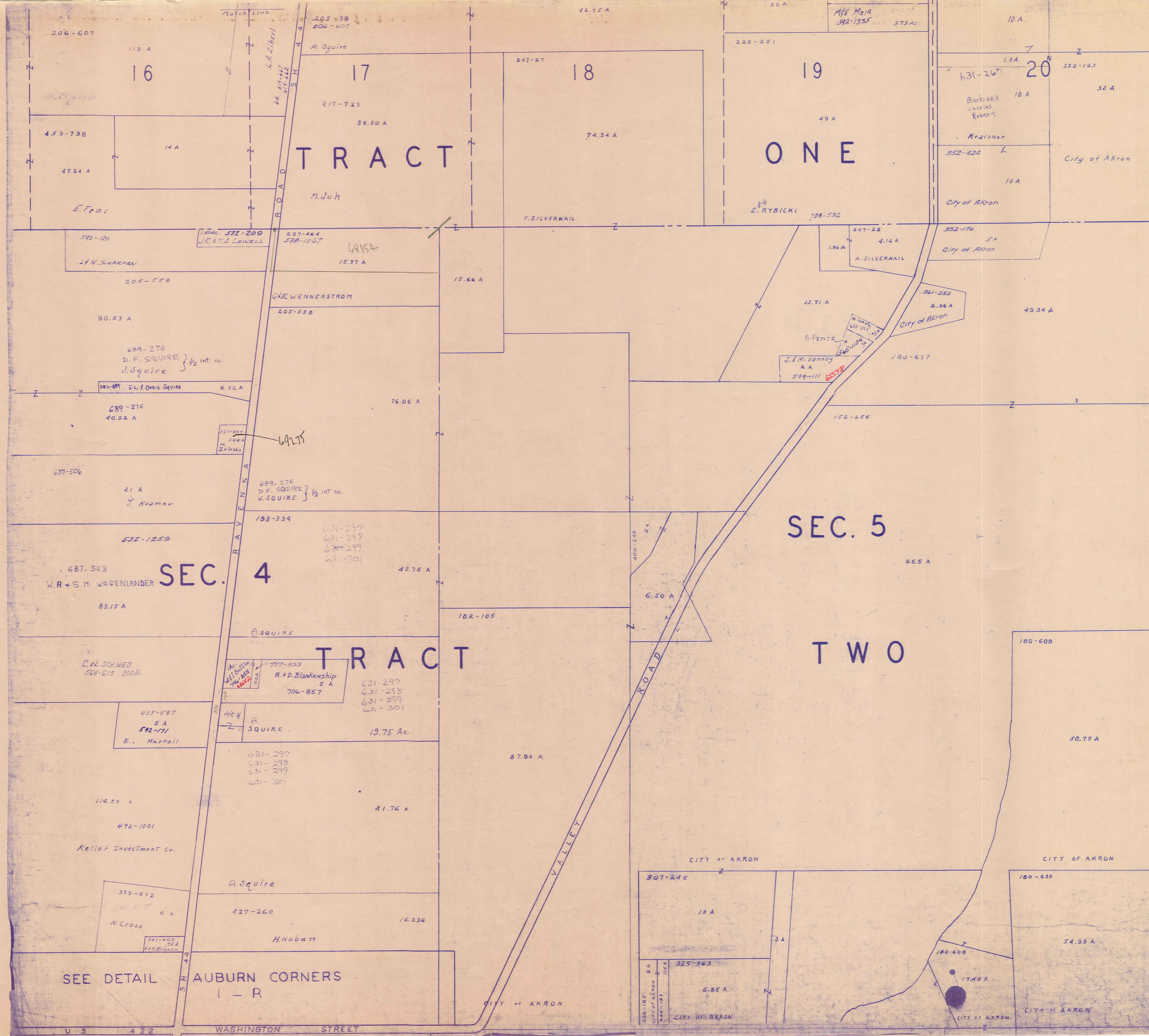
A	B	C	D
E	F	G	H
I	J	K	L
M	N	O	P

SEE DETAIL SHEET I-Q AUBURN CENTER
SEE DETAIL SHEET I-R AUBURN CORNERS

SEE DETAIL SHEET I-Q AUBURN CENTER

Match Line	Tomic 613-274 87.97A.	P Dragomer 509-639 35.86A.	N.E.R. Gademire 509-639 137A.	A.L. Bergmeyer 589-122	A.L. Moseley 571-898	V.J. Swank 212-100	21.98A.	H&E Burns 568-814 1.A.	R&R Baker 355-114	G.S. Hastings 700-534 80.38A.	A Padegimas 220-386 6.25A.	281-578 245-276 3.75A.	151-506 255-260 25A.	225-495 2.A.	2.2617 231-481	6	7	8	9	10	R&R Lewis 469-743	Match Line
------------	-----------------------	----------------------------	-------------------------------	------------------------	----------------------	--------------------	---------	------------------------	-------------------	-------------------------------	----------------------------	------------------------	----------------------	--------------	----------------	---	---	---	---	----	-------------------	------------

Refer to Map K



TROY TOWNSHIP



SCALE 1" = 300'

Jan. 1, 1984

A	B	C	D
E	F	G	H
I	J	K	L
M	N	O	P

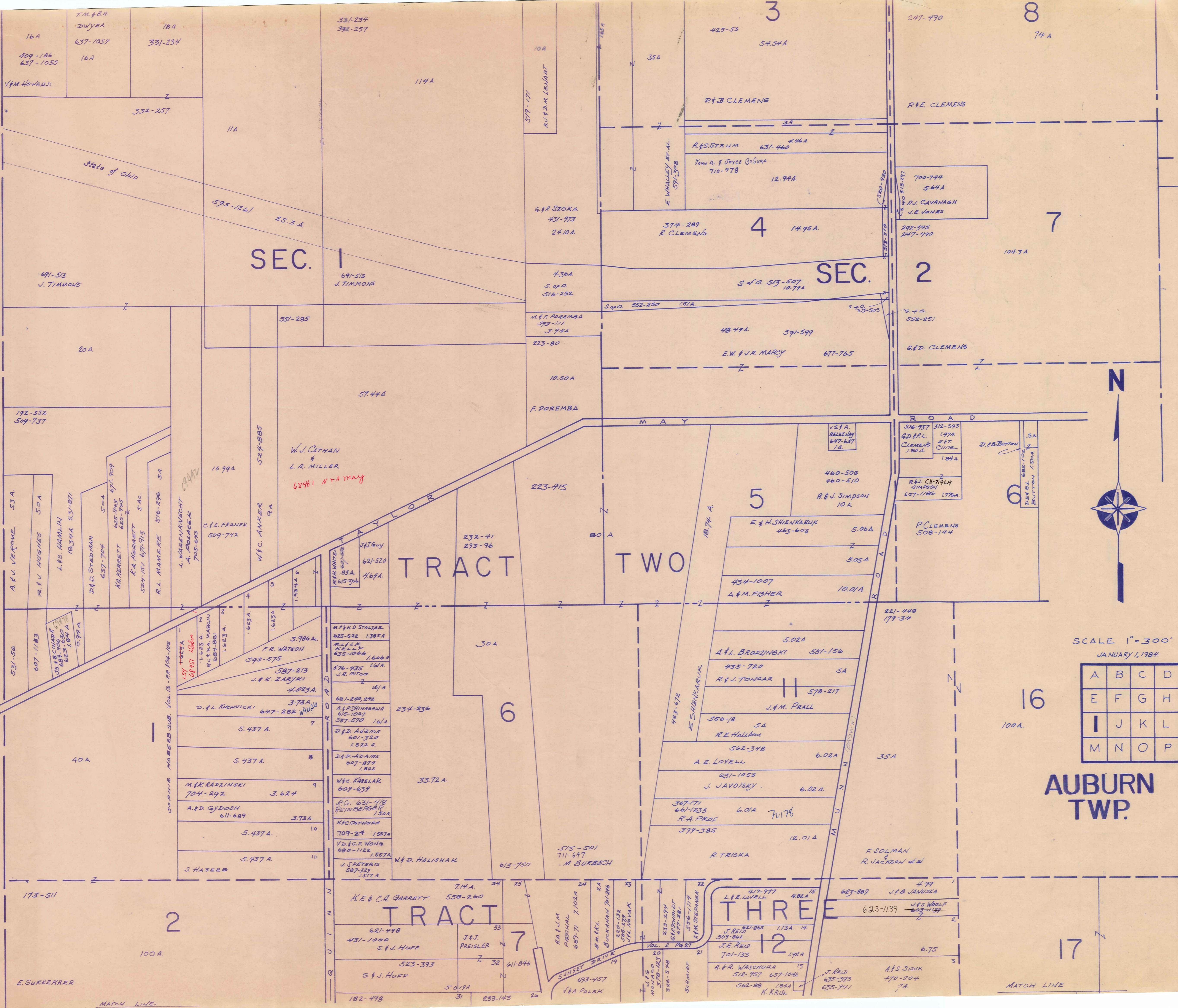
AUBURN TWP.

SEE DETAIL

AUBURN CORNERS
I - R

U S 4 2 2 WASHINGTON STREET

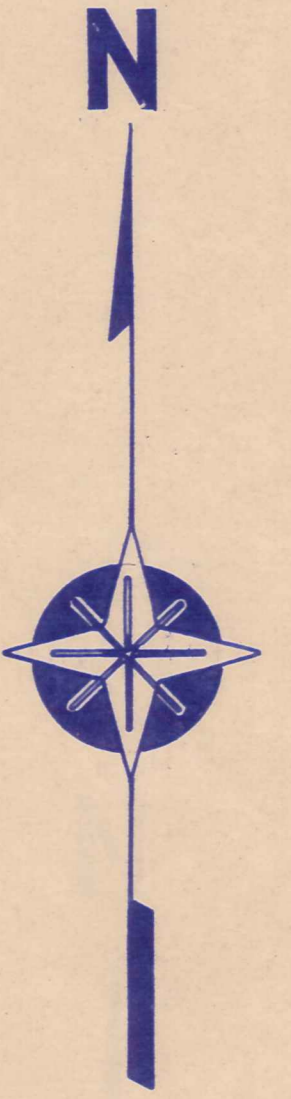
BAINBRIDGE TOWNSHIP



SEC. 1

SEC. 2

TRACT TWO



SCALE 1"=300'
JANUARY 1, 1984

A	B	C	D
E	F	G	H
I	J	K	L
M	N	O	P

AUBURN TWP.

2

TRACT THREE

TRACT THREE

17

MATCH LINE

MATCH LINE

LONGVIEW FARMS
SEE PG I-T

TRACT TWO

SEC 3

SEC. 2



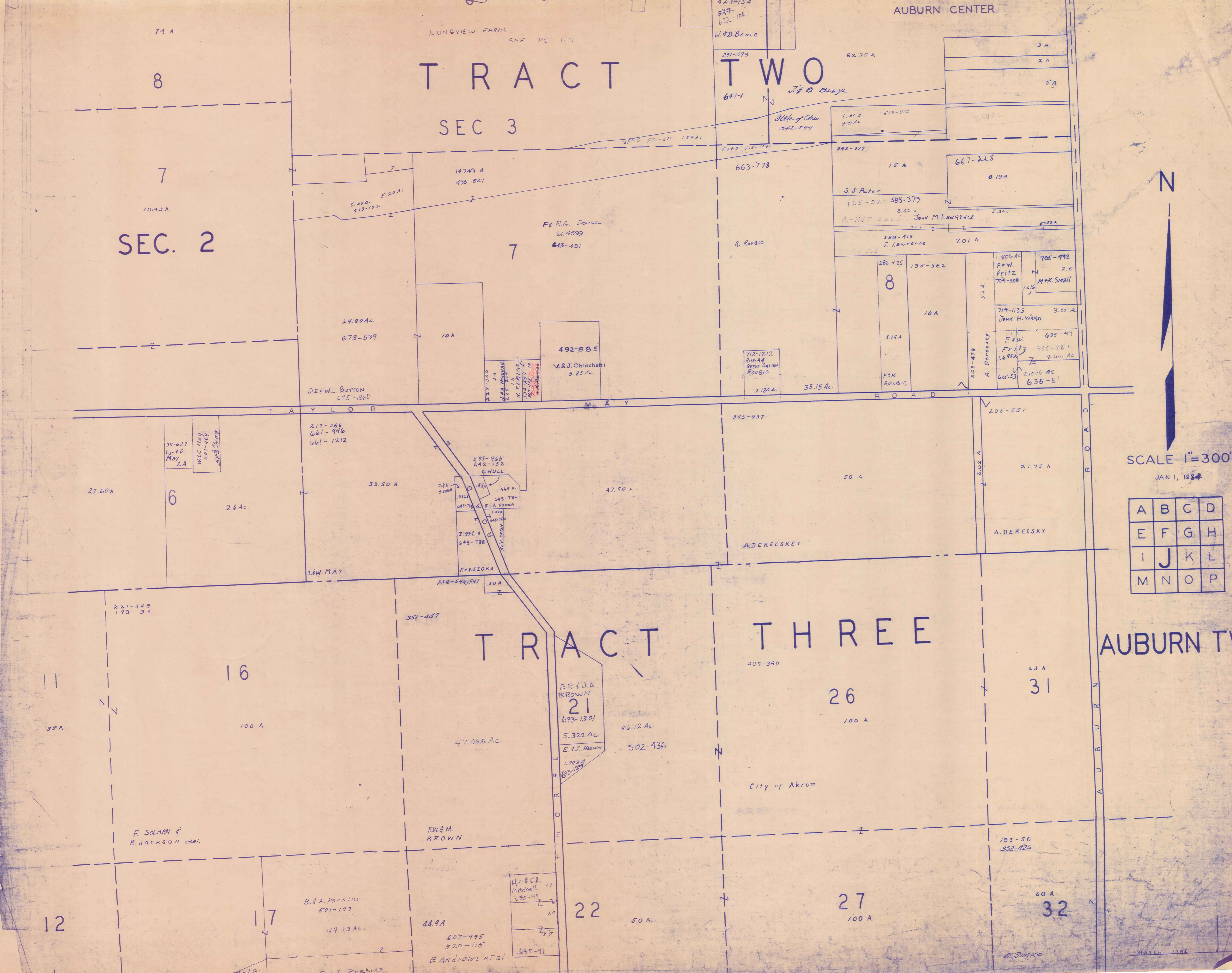
SCALE 1"=300'

JAN 1, 1934

A	B	C	D
E	F	G	H
I	J	K	L
M	N	O	P

TRACT THREE

AUBURN TWP



SEE AUBURN

DETAIL I-Q CENTER

5

SEE DETAIL I-R AUBURN CORNERS

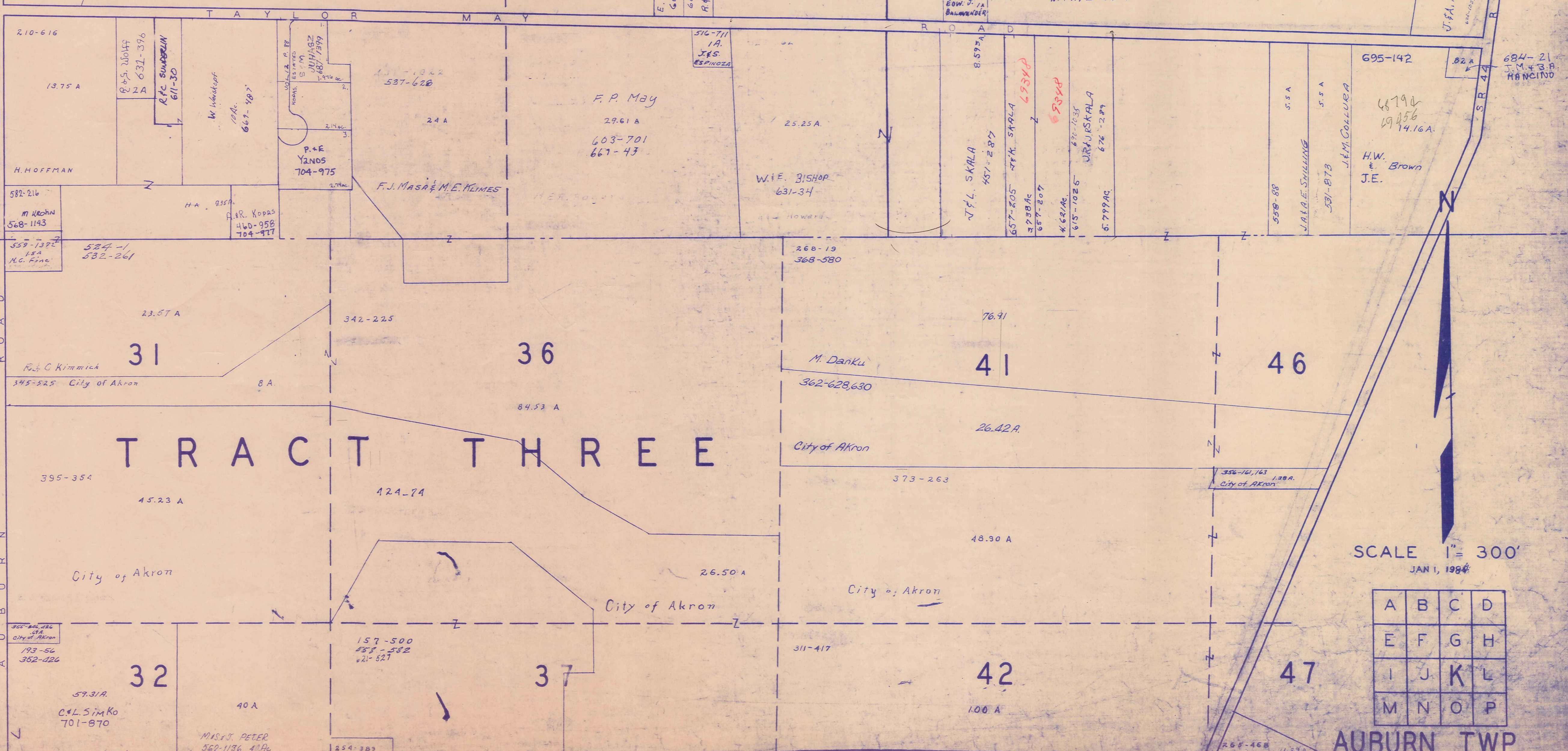
R.W. J. PUCKETT
694-252

SEC. 3

SEC. 4

9
TRACT
10
TWO

E. Watson



SCALE 1" = 300'
JAN 1, 1984

A	B	C	D
E	F	G	H
I	J	K	L
M	N	O	P

AUBURN TWP.

70109
71725

PASS 7

PASS 8

193-54
352-426

59.31A
C.L. SIMKO
701-870

Mrs. J. PETER
362-1136 41A

259-383

268-468 11.25A

City of Akron

Match Line

RAVENNA ROAD
S.H. 44

SEE DETAIL I-R
AUBURN CORNERS

180-607

180-639
CITY OF AKRON
355-124

180-608
17.45 AC
CITY OF AKRON

180-638
54.93 AC
CITY OF AKRON



TRACT TWO

CITY OF AKRON

127.50 AC

39 AC

184-478

CITY OF AKRON

38 AC

352-148

10 AC

CITY OF AKRON

SEC. 5

247-435
S. MARIS INC.

20.25 AC

CITY OF AKRON

187-162

93.94 AC

CITY OF AKRON

51.08 AC

558-775

29.74 AC

IRENE HARDY

558-771

.52.26 AC

6 AC

49.00 AC

188-184

23.82 AC

184-482

35 AC

553-1104

7.25 AC

E. & J. GENTILE

698-1287

7.18 AC

J.S. GIUNTO

609-886

5.57 AC

J. & K. EBERLY

TRACT 51

5 AC

182-106

TRACT THREE

51

51.00 AC

56

100 AC

CITY OF AKRON

7.49 AC

603-417

9.08 AC

15.93 AC

P & H. MEKERA

578-806

7.50 AC

E. A. & T. M. SPEARING

356-227

CITY OF AKRON

9.74 AC

552-723

15.26 AC

L.M. DICARRO

41.00 AC

22.00 AC

187-378
4 AC

558-1102

35.65 AC

212-658

121.06 AC

BAI DEVELOPMENT CORP.
667-708

103.29 AC

105.50 AC

J. & E. GENTILE

57

A. HERRIOT

62

713-247
SUPERIOR SAVINGS
713-295

E. & A. ZELLE
691-820
D.V. & C.K. TOTH
691-387
D.P. & A.J. SANDERS
691-378
J.C. & P.S. ANSPACH
695-1407

T R O Y T O W N S H I P



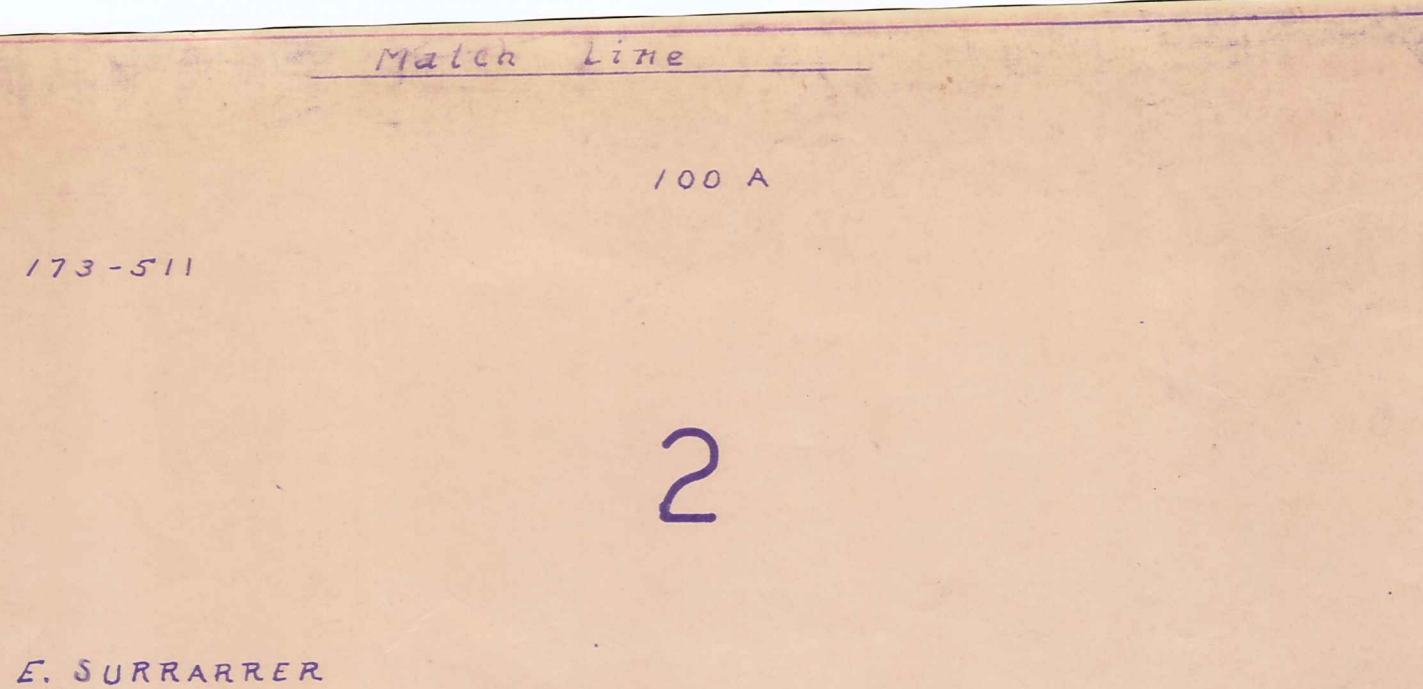
SCALE: 1" = 300'
JAN. 1, 1984

A	B	C	D
E	F	G	H
I	J	K	L
M	N	O	P

AUBURN TOWNSHIP

MATCH LINE

B
A
R
T
H
O
L
O
M
E
W
R
O
A
D



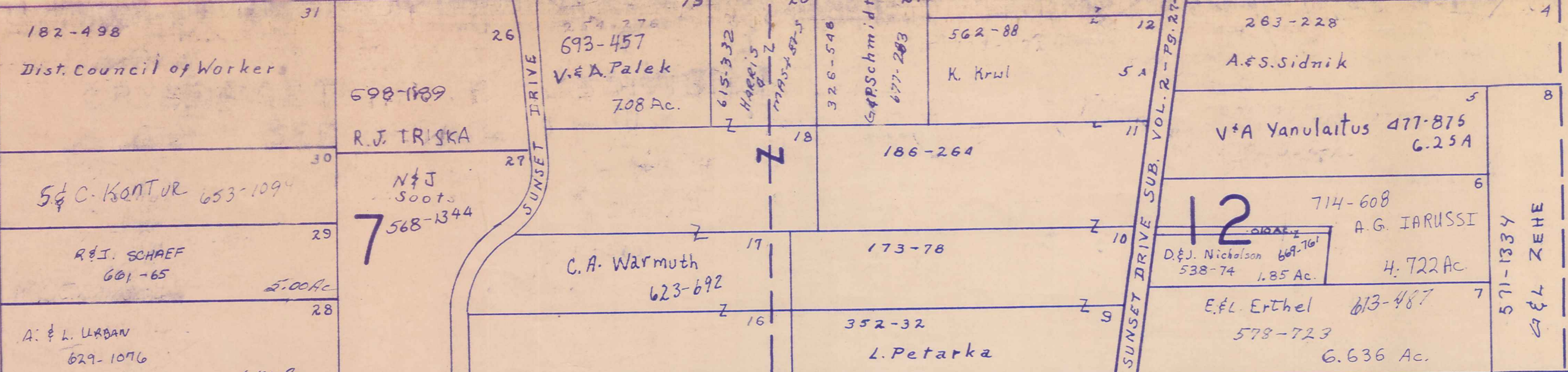
2

3

LABOR SUBDIVISION
Vol. 3 - Pg. 7
DETAIL SEE I-S

4

5



7

8

9

10

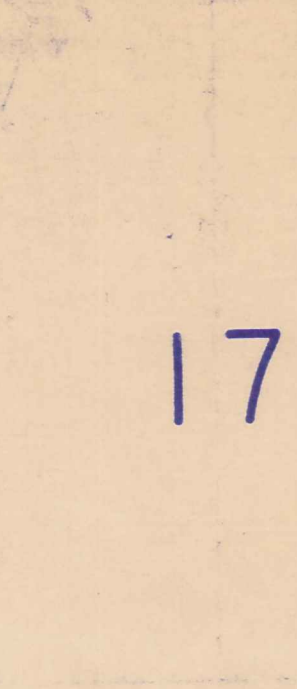


12

13

14

15

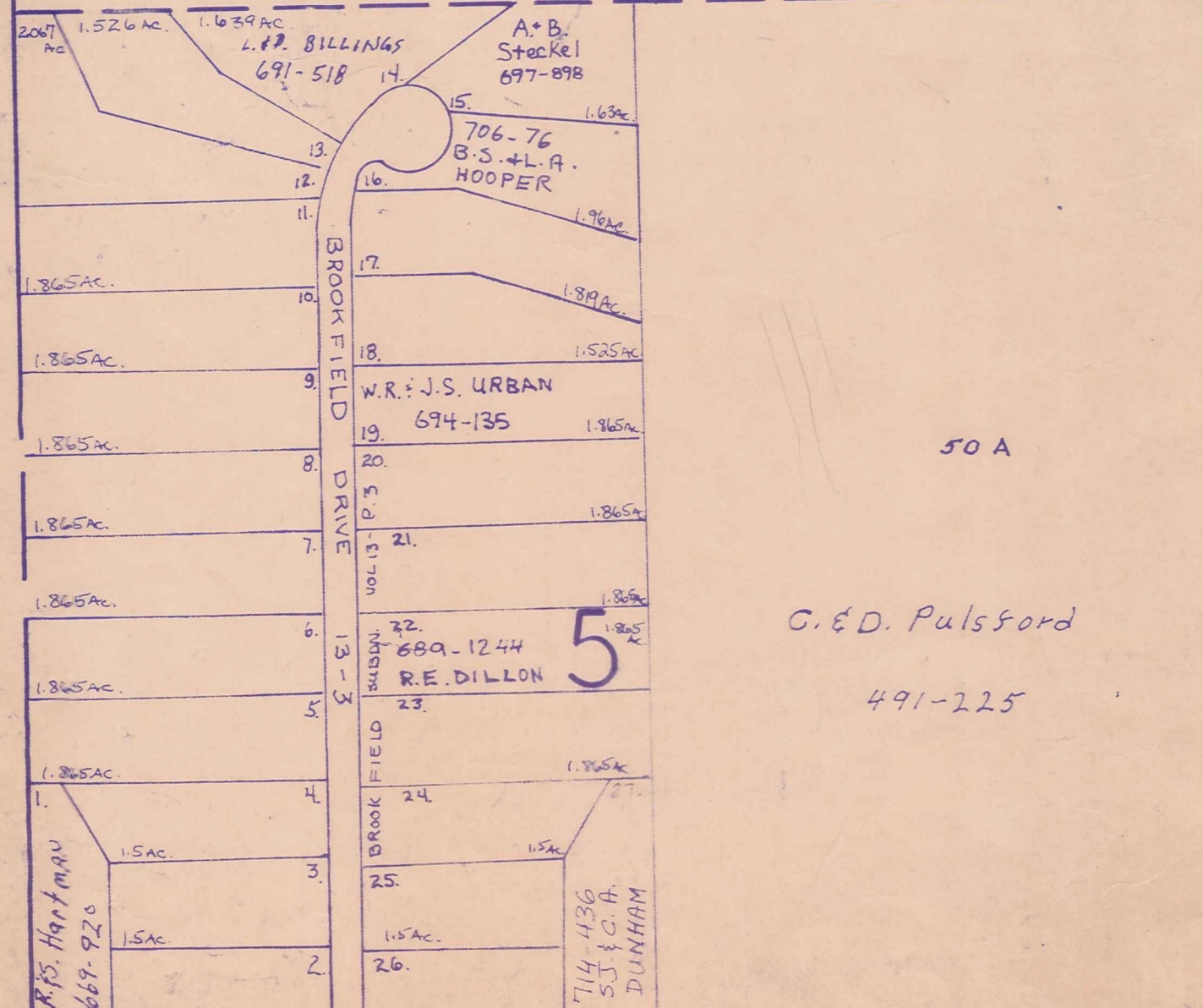
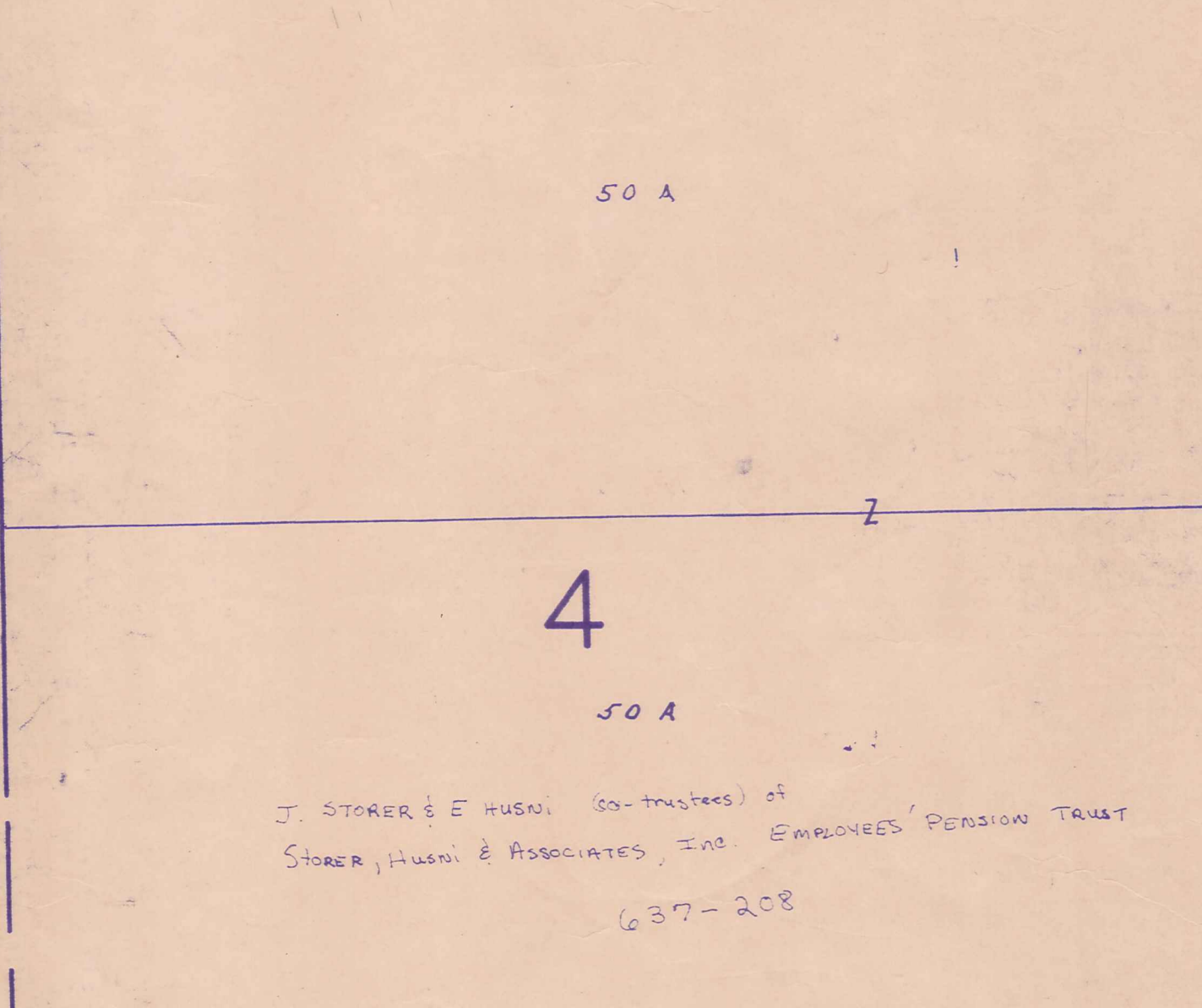
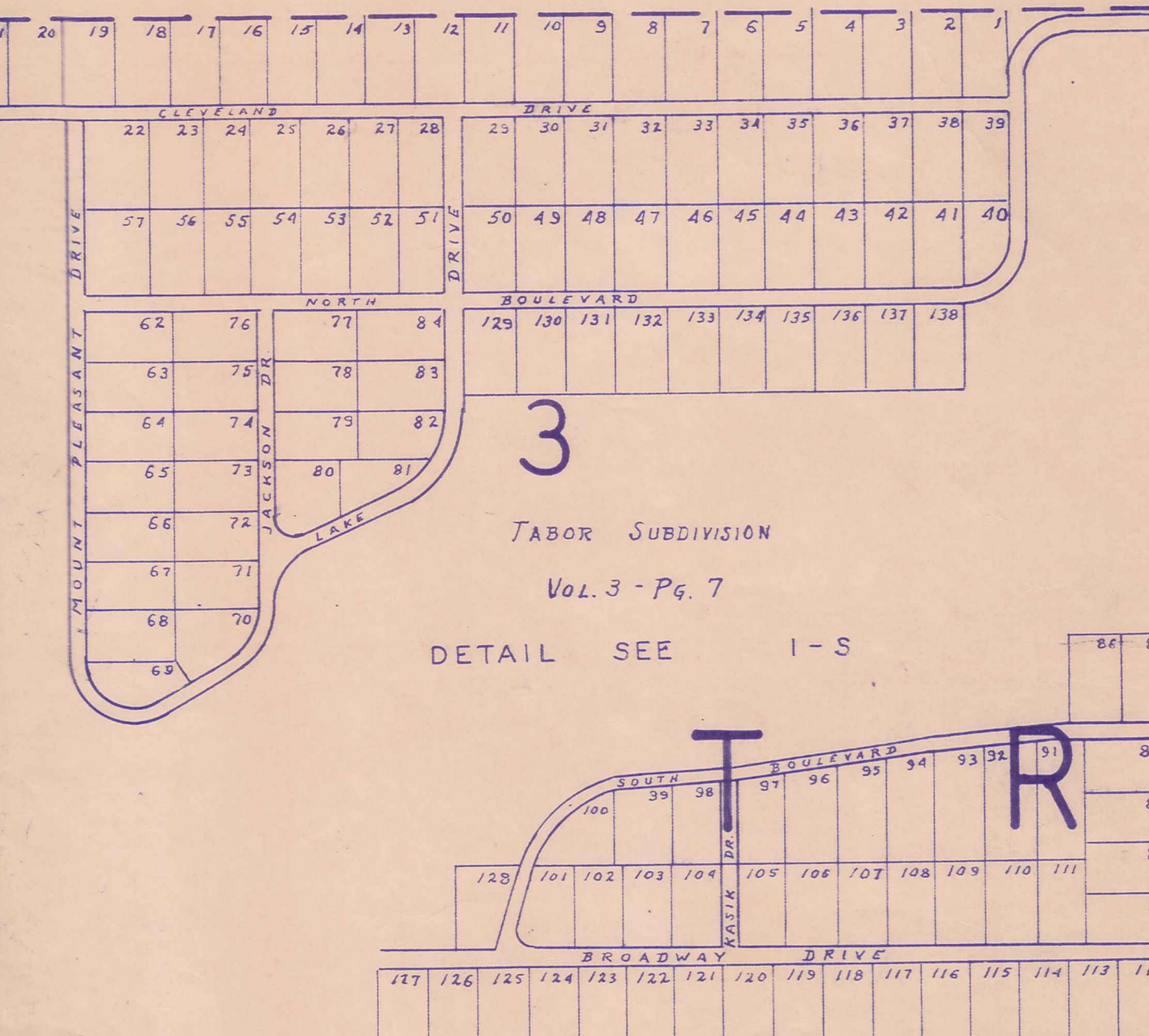
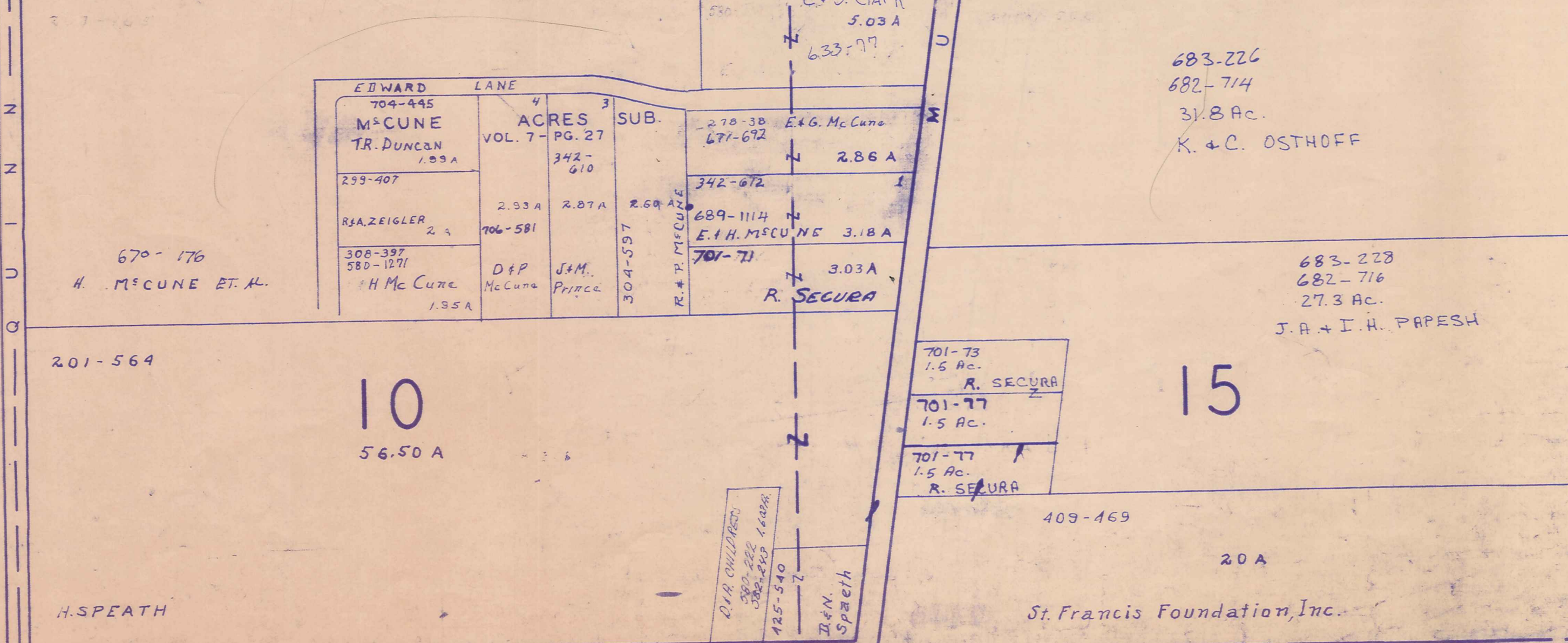
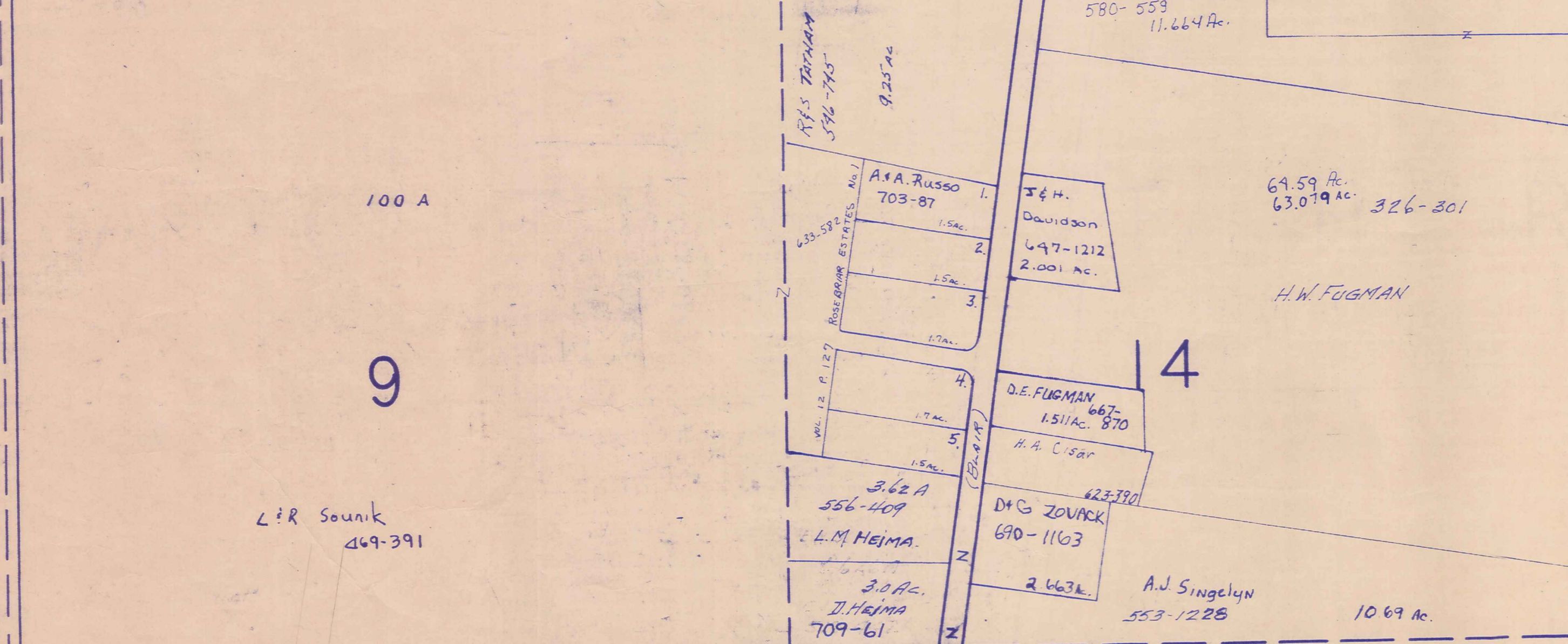
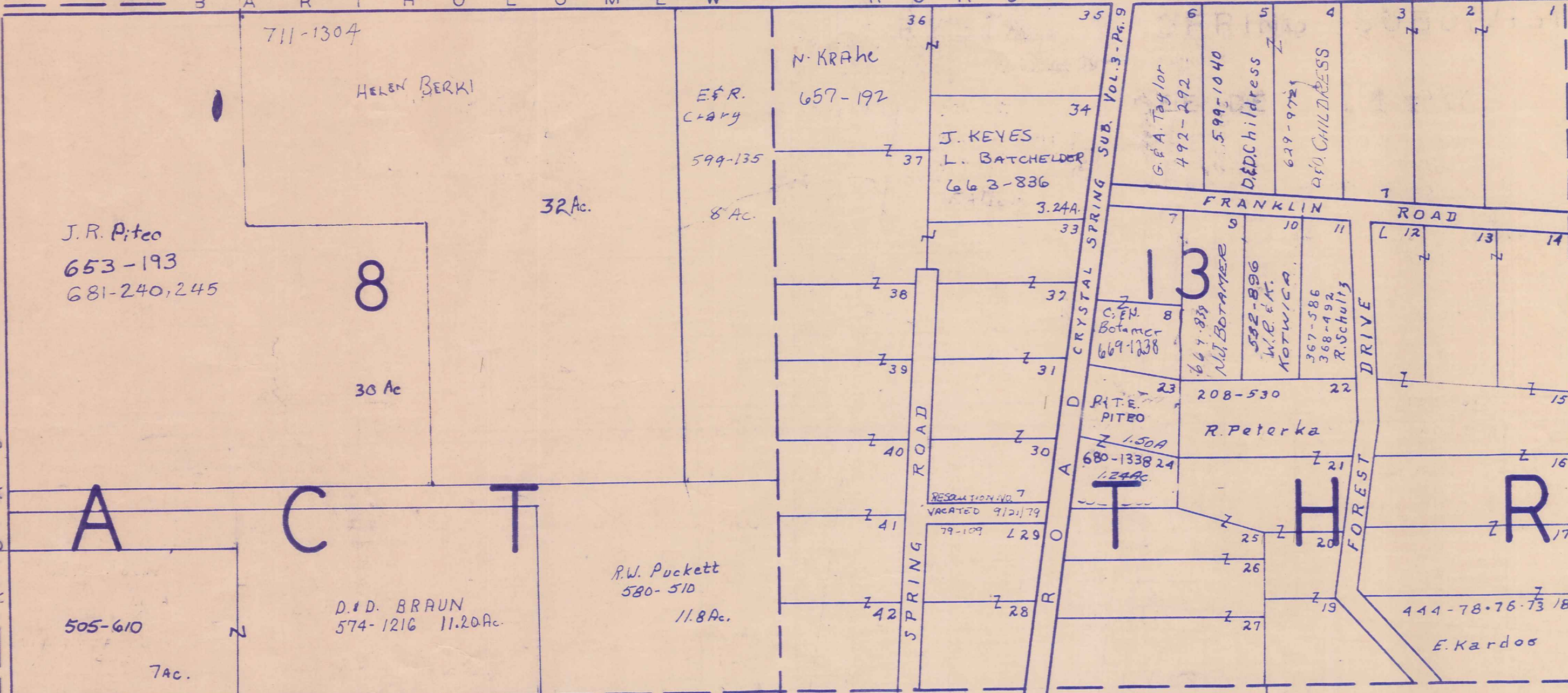


17

18

19

20



SCALE 1" = 300'
JAN 1, 1984

A	B	C	D
E	F	G	H
I	J	K	L
M	N	O	P

AUBURN TWP.

20

MATCH LINE

MATCH LINE

12

17

22

27

32

Perkins Enterprises Inc.
501-135
40.00 Ac.
34.95 Ac.

B. & A. Perkins
501-133
10.7 Ac.
3.90 Ac.
B. & A. Perkins
653-286

H. Andrews
48.33 Ac.
607-995
5-2-415

58-450
W. Young
1.67 Ac.

409-360

50 A

100 A

City of Akron

60 A

193-56
352-426

C. SIMKO

R. Loson
538-459
1.95 A
1.96 A

D. Hawkins
J. Calvert
2.94 Ac
637-700

246-164, 165
6885
4.79 A
2.4011

4.79 A

E. M. FETH

224-105

220-154

292-31
617-764
606-1130
2.1
J. Fogel
166 A

678-169
2597
H.A. & W.A. Brandel
713-1142
2 A

391-102
Fogel
75 Ac
713-1144
125 A
A & L Stinson
713-1144
713-1142

703-354
M.S. Yurczak
72
703-344
2 A
M.J. Yurczak

4 A

R.D. & S. Pealer
582-1071
673-288
4.154
B.L. Kravitz

16.15 A
435-769
5.5 A

703-1193
B. Vrabel 1/2 Int.
Vrabel et al.
L. Brown

4 A

B & P Dillon
478-938
6 A

C. S. Brown
667-1298
3.370 Ac.

L. Brown
200-473
452-3
7.54

C. S. Brown
L

77.79

L. & G. Brown

3.5 A

V. Fuson

3.5 A

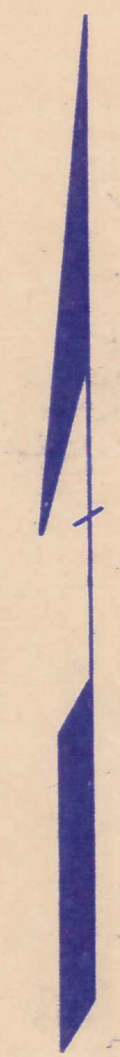
6.25 A
E. D. McIntosh
537-1177

20 A

391-251
2.63 A
687-1263
G. & C. Rogers

25.12 A

N



SCALE 1" = 300'

JAN 1, 1984

A	B	C	D
E	F	G	H
I	J	K	L
M	N	O	P

AUBURN TWP.

35

13

18

23

28

609-813
10 A
C. & K. Stewart

599-221
657 Ac.
B. & H. Wallace
8.5 ac

C. J. Ambrose, Jr.
676-799
689-786

556-1359
623-254
K. & P. Gruly

587 Ac
556-1361
623-690
4.57 Ac
556-1357

30V Dina
4.57 Ac
556-1357

R. A. & M. Lange
4.57 Ac

70.44 A

40.50 A

480-369

WHITE OAKS FARM, INC.

L. A. Alexander
692-841

703-1193
B. Vrabel 1/2 Int.
Vrabel et al.

T R A C T

T H R

E

431-766

39 A

100 A

50 A

50 A

100 A
14

19

24

29

F. & D. & F. Testa

CHADWICK farms, Inc.

1 A

568-781

57842

246-594
573-1124

30.62 A

D & J Haverer

79.35 A

6.25 A
E. D. McIntosh
537-1177

20 A

63 A

79.25 A

512-516

30 A

S. QUADDER

CRACKEL ROAD

15

20

25

30

J. Papesch

60 A

193-56
352-426

32

60 A
C.L. SIMKO
701-870

254-389

37

80 AC.

157-500
558-512

MIS. J. PETER
562-1136 40 A.

D. J. MAY

H. MAY ET AL

311-417

42

100 A.

CITY OF AKRON

265-468

11.29 A
CITY OF AKRON

47

241.29 A

208-226
210-106

B A R T H O L O M E W R O A D

532-649
532-651

33

71.95 A

38

100 A

TRACT

713-1074

J. & J. SIMAN
RE. & K.K. KLEINMAN

220-81
206-524

460-419
5A

CITY OF AKRON

43

88.40 A

THREE

713-1077

698-298
J. & J. SIMAN
R. E. & K. K. KLEINMAN

292-477

48

CITY OF AKRON

7183 A

N

8 A

W. B. VARGO
661-69

T. D. Benchea
702-835

27.61 AC.

K. BONNER

417-482
516-1079

9 A

W. T. BONNER 3A.
667-546 667-814
691-894

49

524-116

S.S. SMITH
709-215
711-1254
10-39 AC.

21-0186 A

SYLVIA S. SMITH
711-1253
6.11 A

J.L. SCHERING
633-888
5.41 A

R.O. G.D. 1.87A.
FROST 694-722

SCALE 1" = 300

Jan 1, 1984

200-473

C. G. BROWN
DIS. TRUST
667-28
3.535A.

34

80.255A

L. & G. BROWN

243-252
591-150

20.34 A.

GEAUGA COUNTY

39

100 A

J. & J. SIMAN

44

126.72 A

W. S. B.
Herrington
578-661
587-373
2 AC.

60 Easement

T. & C. FREITAG

2.35 A

199-575
W. Rodovich
635-571
625-553

A	B	C	D
E	F	G	H
I	J	K	L
M	N	O	P

AUBURN TWP.

9.2775 Ac.

G. Henry (1/2) 625-435
A.J. Reithoffer (1/4)
625-437

J. Reithoffer 625-49

531-826
8.92 Ac.

697-748
6125 Ac.
J. A. REITHOFFER

F. D. LEE
687-34

3.29 Ac.

7.187 Ac.

687-748

368-244

2.3 A

587-185
Daisy D. Bennett 2A
Hood

CITY OF AKRON

R O A D

C R A C K E L R O A D

CHADWICK Farms, Inc.

E. ALMY

B. L. HEAD
696-242

Match Line

Match Line

52

57

62

53

58

63

T R A C T

T H R E

T O W N S H I P

54

59

64

55

60

65

T R O Y

N

SCALE 1" = 300'

JAN 1, 1964

A	B	C	D
E	F	G	H
I	J	K	L
M	N	O	P

AUBURN TWP.

241.29 A

105.50 A

35.65 A

103.29 Ac.
661-708

445-1000
R.F.R. GRETZER 672 Ac.

685-479
T. & K. DOCKRILL
696-1240
M.E. TALK
SHELTON
691-396

D.L. & P.A. SIMS
1202 52
691-408

D. R. & P. A.
LEWIS
691-367

MILLER
789-1277
172 ac

BAI DEVELOPMENT CORP.

U. GENTILE

212-658

130

69321

121.06 A

D.K. Sprute
702-55
75a 1.05

J. & D. VARGO
657-800

A. HERRIOTT

292-477

50 A

25 A

25 A

71.83 A

CITY OF AKRON

42.98 A

L. Havlock
505-53

8 A

T. & D. BENCHEA

367-33

212-658

P. & J. POOLE
663-621

10.01 A

702-835

377-66

6

431-200

88 A

711-1254

54

73.06 A

94 A

76.43 A

16.39 Ac.
24 086 Ac.
709-275
S.S. SMITH
10.63 Ac.

47.65 A

S. Keto

587-666
RUBEN & ROSITA
AGRA
447-5
7.6 A
5.60 Ac.

City of Akron

235 A

A. V. VICKI
478-621

50 A

32.31 A

75.76 A

75 A

55

60

184-340

56.75 A

368-244

40 A

374-409

28.63 A

591-474

12.6 A

23 A

City of Akron

CITY OF AKRON

FOX ROAD

SHAW ROAD

70741

70741

W-1:
A-66~

W-2:
A-64~
B-62~
C-60~

W-3:
A-54~ P. DI BLASI 706-814
B-52~ W. J. RINI 708-427

W-4: VOL. 14 - PG. 110
A-50~
B-48~ D. G. RIETHMILLER 705-649

W-5:
A-58~
B-56~

W-6:
A-46~
B-44~
C-42~

W-7: VOL. 14 - PG. 72
A-40~ E. KRAMES 703-349
B-38~ H. EPPRECHT 700-1300
C-36~ J. N. & C. HOLYLAND 714-720

W-8:
A-34~
B-32~

W-9: VOL. 14 - PG. 72
A-30~ B. S. JERPAK 713-468
B-28~ H. J. HOLZHEIMER 703-361
C-26~ J. C. RUSSELL, JR. 703-363

W-10:
A-24~ R. + H. AMOS 707-370
B-22~ K. + D. WERNER 707-1185
C-20~

W-11:
A-18~
B-16~

W-12: VOL. 14 - PG. 72
A-14~ A. + J. SCIULLI 701-737
B-12~ 242 EAST OHIO SERV. CORP. 700-1339
C-10~ MIDLAND SERV. CORP. 707-376

UNIT-21: VOL. 14 - PG. 124
A-~
B-~
C-~ S. M. + H. J. TOMEN 710-748

Handwritten: 11.669AC

LAND IN THE WOODS SUBDIVISION VOL. 11 Pg. 33

BAINBRIDGE TOWNSHIP

AUBURN TOWNSHIP

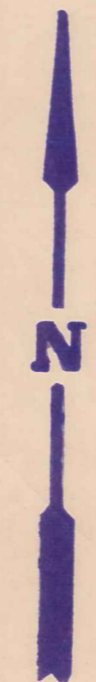
LAND IN THE WOODS SUBDIVISION
VOL. 11 Pg. 33

M. J. CONTRACTING CORP.
Vol. 685 Pg. 266

M. J. CONTRACTING CORP.
Vol. 685 Pg. 266

M. J. CONTRACTING CORP.
Vol. 685 Pg. 266

AUBURN LAKES CONDOMINIUM
SCALE 1"=200'

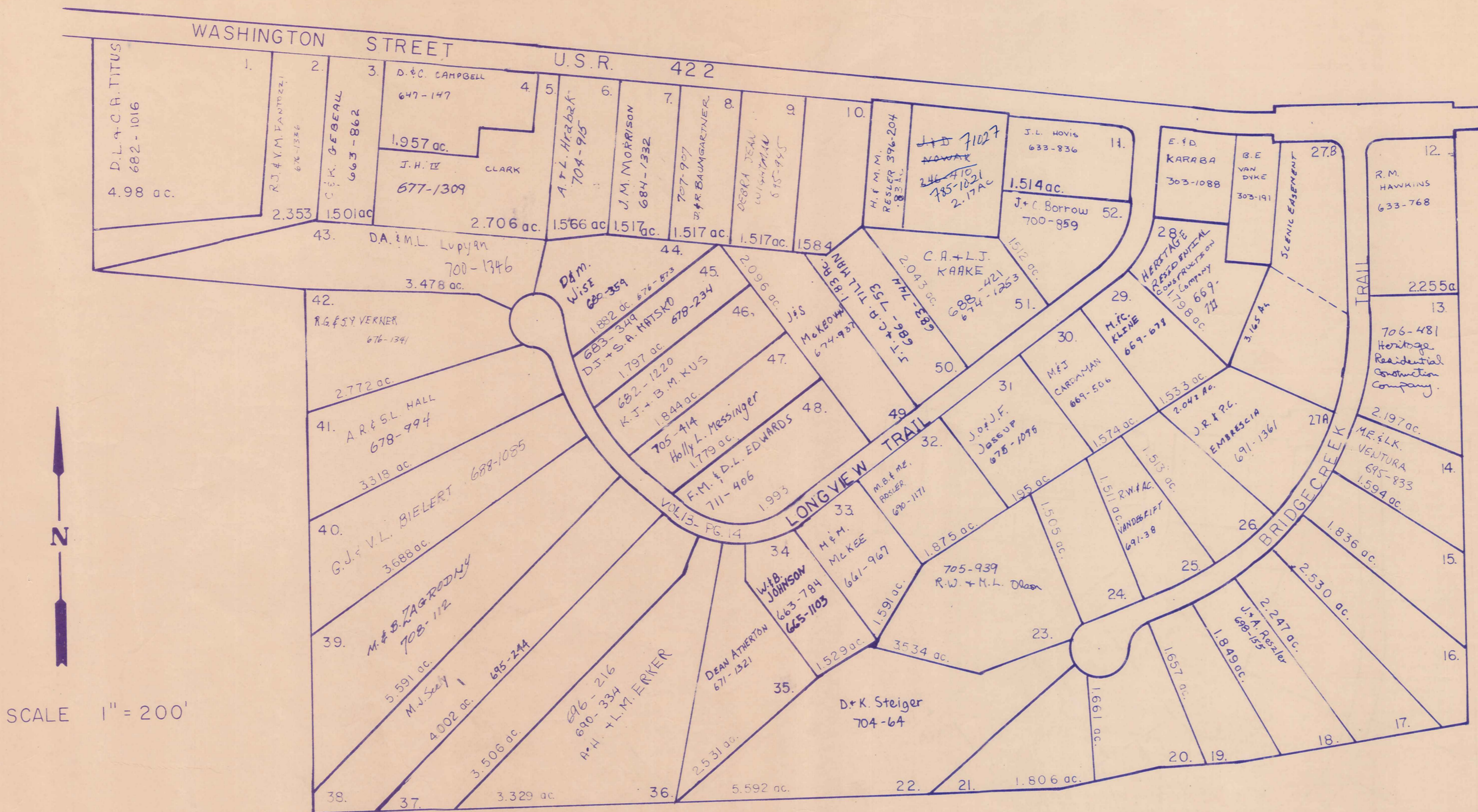


PRINTED
JUN 6 1984
SHERMAN COUNTY ENGINEER

AUBURN

OL. 8 SEC. 2

OL. 6 SEC. 3 TRACT 2



S/L 27 RESUB VOL. 14-P6.50

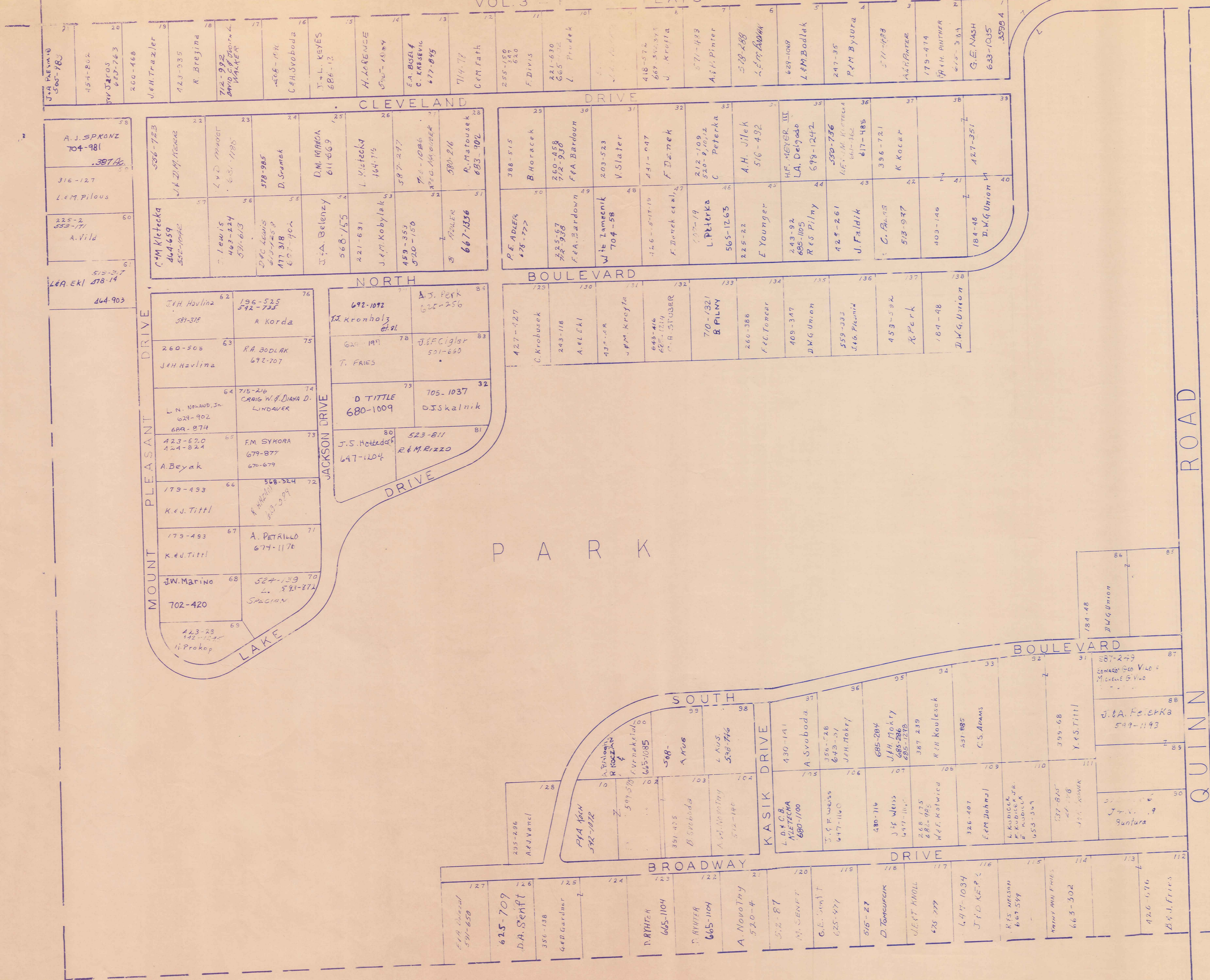
LONGVIEW FARMS 1 & 2

VOL. 12 PP. 62-64

VOL. 13 PP. 13-16

TABOR SUBDIVISION

VOL. 3 - PLATS



SCALE 1" = 100'
JAN. 1984

AUBURN TWP.

AUBURN TP.

[CENTER]

TRACT 2 SECTION 3



SCALE 1 in. = 2.5 ch. = 165 ft.

JAN 1, 1984

I-Q

TRACT 2
SECTION 4

AUBURN TP.

AUBURN CORNERS
& VICINITY

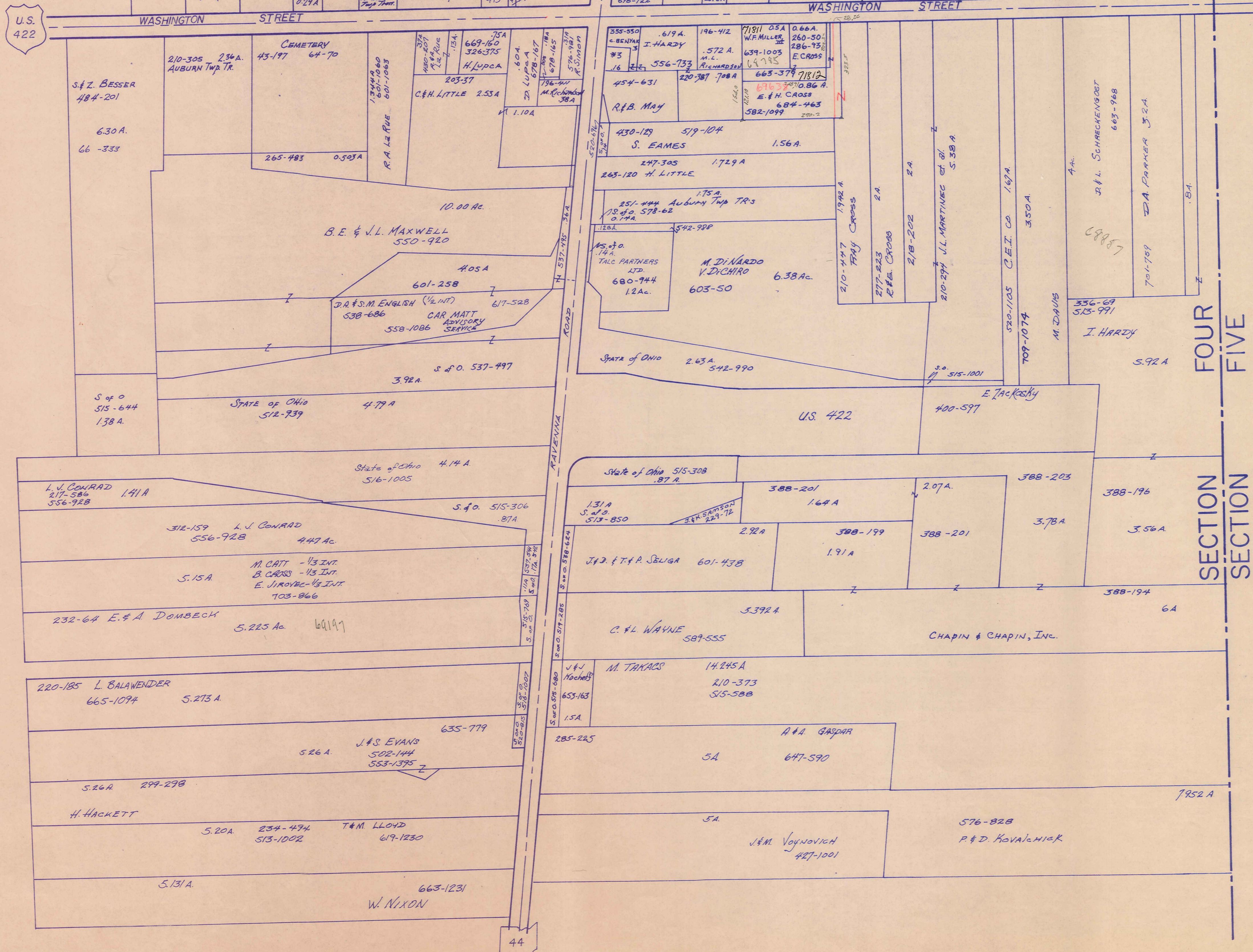
427-260

16.236 A.

44

E. HOBAN

CH-68950 ← #2
#2 519-78 T. & A. CARROLL
#3 373-543 C. & M. BENJAK



Scale 1" = 2.5 ch. = 165 ft.

JAN. 1, 1984

FOUR
SECTION
SECTION FIVE

I-R